

High-speed marking system with laser

IMPRESSION-L100

IMP-L100

Fiber Marking Laser is able to do high-speed and high-accuracy marking on various materials employing Pulsed Wave Ytterbium-doped laser with scan head. The device has been used in various fields such as automobile, electricity, electronics and others for its own high-speed and accuracy. It is a high-end marking solution that perfectly meets customer's needs.

REDTechnology Marking Laser utilizes a configuration module known for its excellent quality and performance with its long-term use of this control technology. Also, it is adaptable to various requests from different industries fields as well as assuring industrial safety standards.



Specification

Size	358mm(W) x 550mm(H) x 585mm(D)	Beam quality	M2 <1.3	Power consumption	< 400W
Max. engraving area	112x112	Marking speed	3000mm/s	Power supply	AC 100~240V 50/60Hz
Laser power	20W	Frequency	1~400kHz	Cooling system	Air Cooling
Laser wavelength	1064nm	Weight	45kg	Risk grade	Class 4

Uses

Engraving serial number, barcode, logo, graphic image on various subjects such as automobile, electricity, electron, mobile, medical device, tool and etc.
Engraving name, initial, pattern, image on products such as ring, pendent, watch, jewelry and accessories.
Engraving various metal materials such as aluminum, brass, stainless steel, titanium and etc. with a great depth of engraving and cutting.



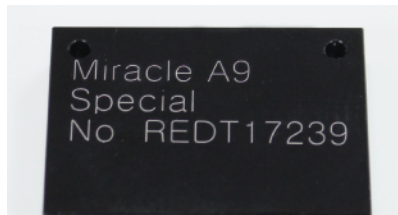
Engraving small letters

- High-accuracy scan head provides clear marking for small letters in 0.5mm size which is difficult to discern with the naked eye.



Successive engraving function

- Minimize user's interference by automating repeatable engraving system such as serial numbers.
- Convert serial numbers automatically with engraving order.



QR Code engraving system

- Offers various types of marking formats for barcode such as 1D barcode, 2D Data Matrix, QR Code.



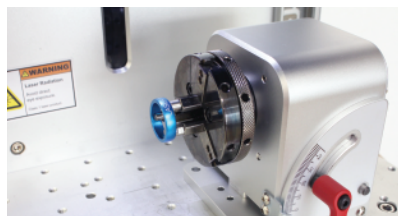
Chamber structure for user's safety

- Provides safe working environment by preventing accidents with chamber structure.
- Provides pleasant working environment by preventing dust scattering.



Rotary marking support

- Engraves on the external as well as internal diameter of cylindrical products such as rings by connecting rotary marking device.
- Easy to attach or detach in detachable module structure.



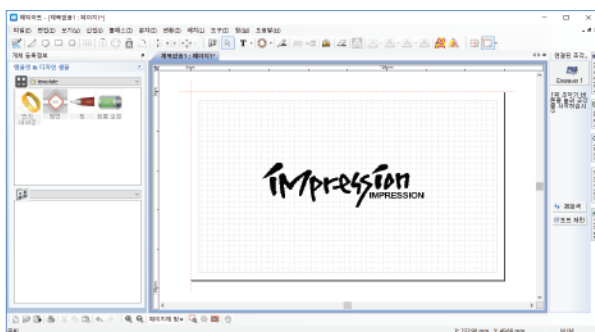
Various engraving effects

- Various color effects such as black marking, color marking, etc.
- Supports various engraving effects such as single marking, outline marking, hatch marking etc.



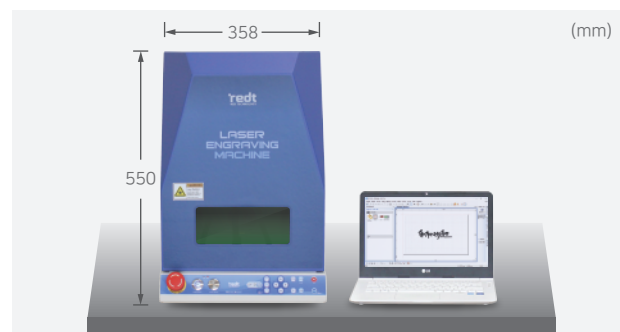
Specialized software

- Easy to operate.
- Provides various marking solutions.
- Provides advanced editing and formatting functions.
- Easy to make texts, images, logos and barcodes.
- Supports dxf, svg file extension.



Installation and use with compact size

- Minimizes installation space by designing compact size that can be placed on table.
- The weight is devices lighter than the general laser engraver and makes transfer easier as well.



Automatic moving cover

- Automatically opens and closes its own cover when start marking.

150mm Stroke Z-axis

- Engraves maximum 150mm height material.
- Memorizes 8 points of materials' height and position.

Directly interlocks external devices such as dust collector and others

- Control the external devices such as dust collector and others directs when engraving occurs.
- For example, if a dust collector is connected, dust collection starts at the time when engraving begins and shuts down automatically when engraving is done.